

---

**GEOGRAPHY**

**2217/12**

Paper 1

**October/November 2017**

INSERT

**1 hour 45 minutes**

---

**READ THESE INSTRUCTIONS FIRST**

The Insert contains Photograph A and Figs. 3A, 3B and 3C for Question 2, Fig. 4 for Question 3, Photographs B and C for Question 4, Photographs D, E and F for Question 5, and Fig. 9 for Question 6.

The Insert is **not** required by the Examiner.



---

This document consists of **9** printed pages and **3** blank pages.

Photograph A for Question 2



Fig. 3A for Question 2

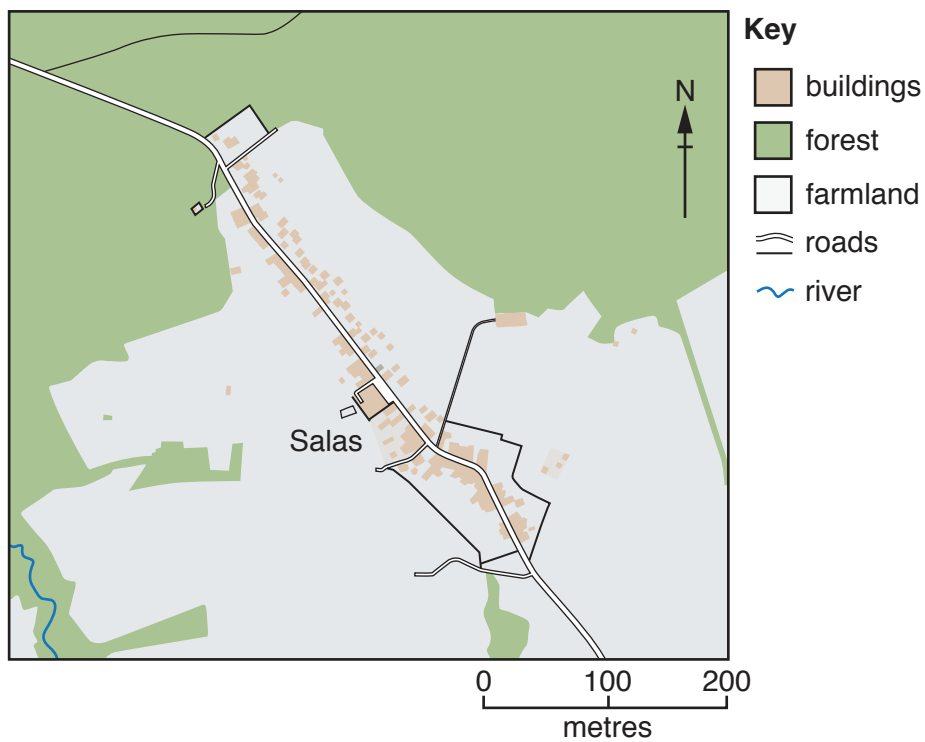


Fig. 3B for Question 2

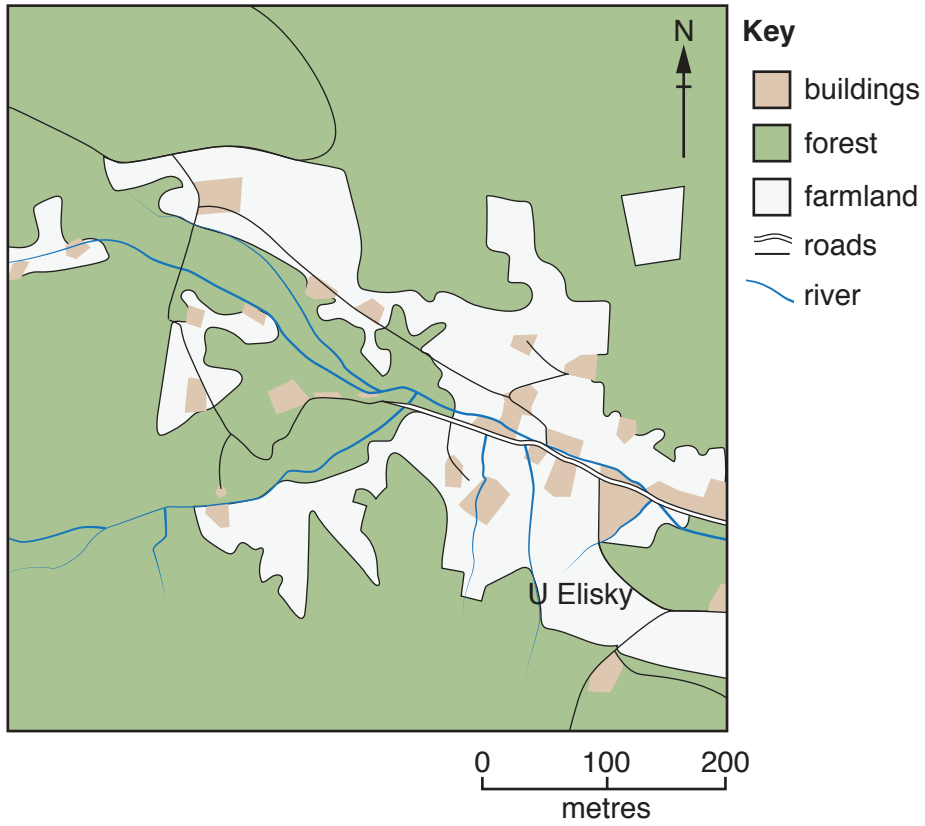


Fig. 3C for Question 2

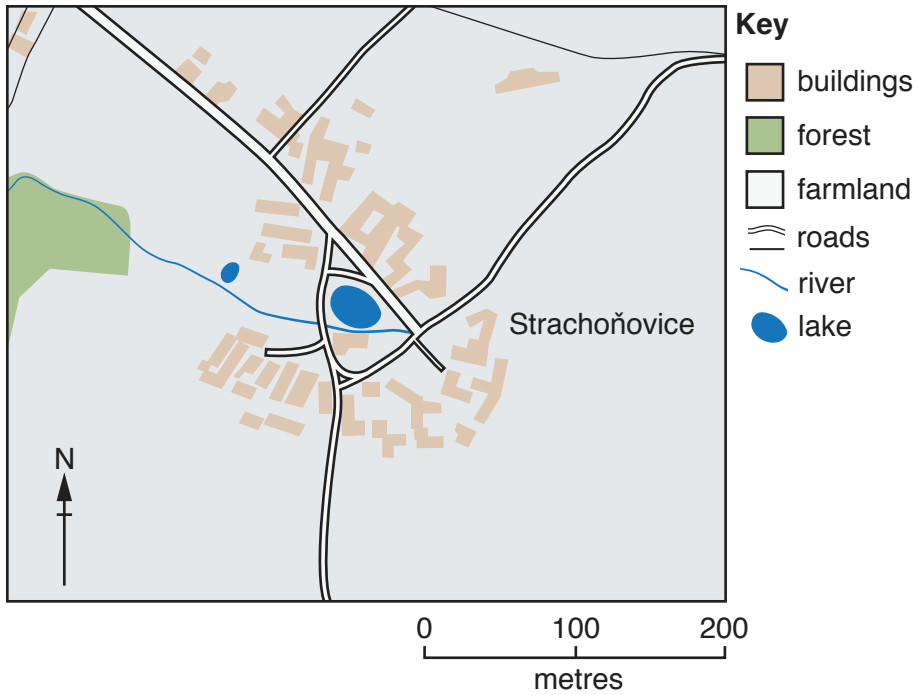
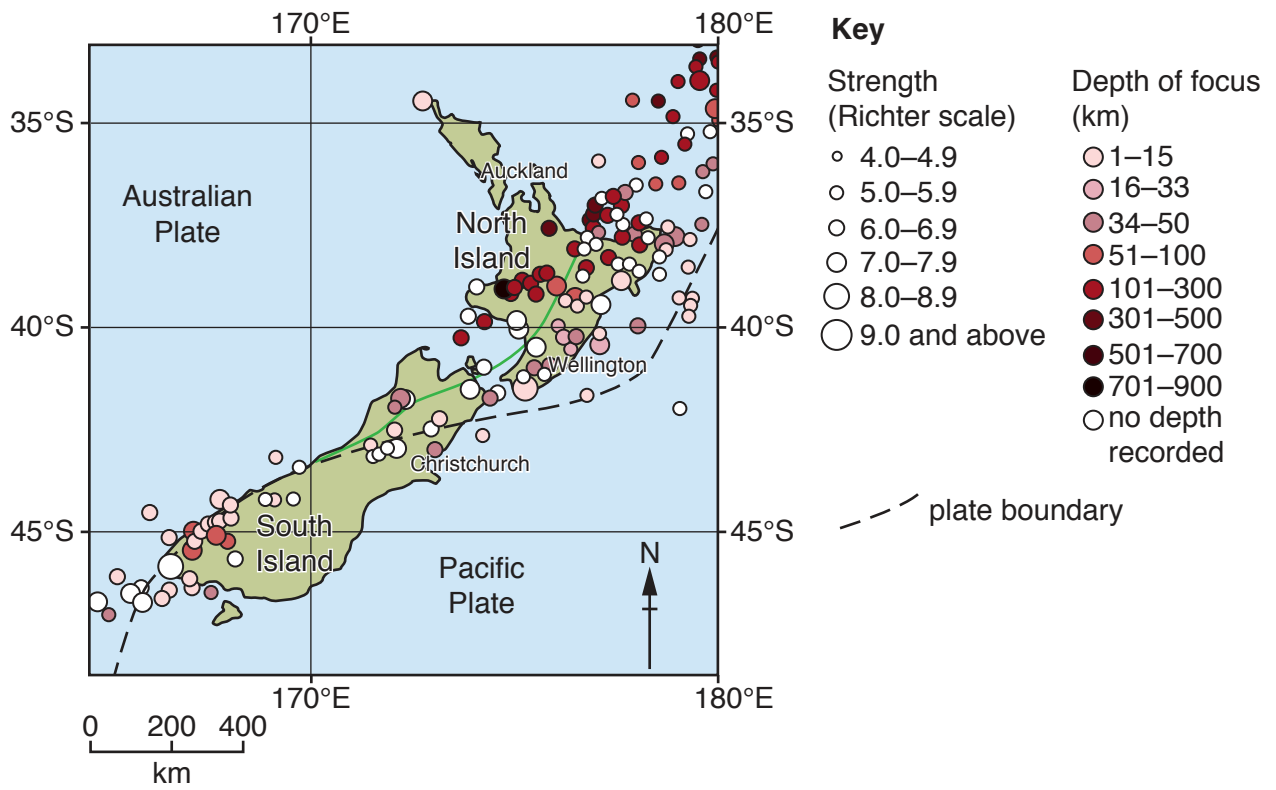


Fig. 4 for Question 3



Photograph B for Question 4



Photograph C for Question 4



Photograph D for Question 5



Photograph E for Question 5

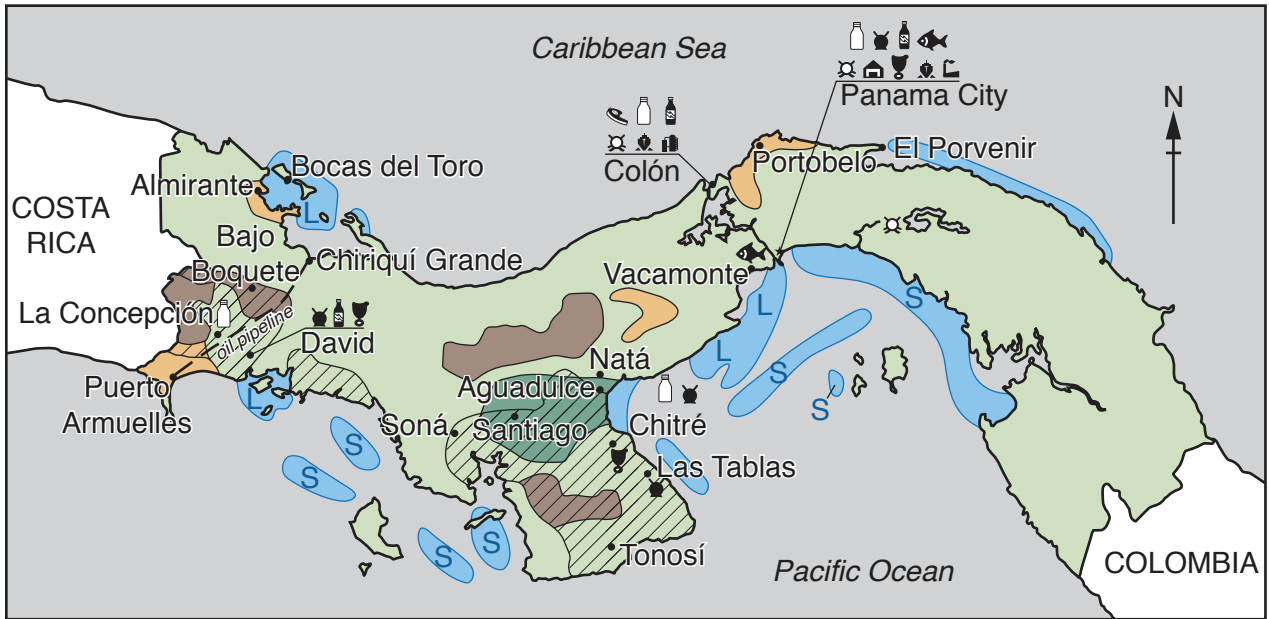


Photograph F for Question 5





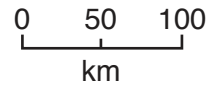
Fig. 9 for Question 6



**Key**

**Manufacturing**

- |                 |                          |                |
|-----------------|--------------------------|----------------|
| meat processing | shrimp processing        | ship repairing |
| milk processing | power generating         | oil refining   |
| sugar refining  | construction materials   | steel rolling  |
| beverages       | tanning (making leather) | capital city   |
|                 |                          | city           |



**Agriculture**

- bananas
- coffee
- sugar cane
- cattle

**Other**

- fishing
- lobster
- shrimp





**BLANK PAGE**

---

Permission to reproduce items where third-party owned material protected by copyright is included has been sought and cleared where possible. Every reasonable effort has been made by the publisher (UCLES) to trace copyright holders, but if any items requiring clearance have unwittingly been included, the publisher will be pleased to make amends at the earliest possible opportunity.

To avoid the issue of disclosure of answer-related information to candidates, all copyright acknowledgements are reproduced online in the Cambridge International Examinations Copyright Acknowledgements Booklet. This is produced for each series of examinations and is freely available to download at [www.cie.org.uk](http://www.cie.org.uk) after the live examination series.

Cambridge International Examinations is part of the Cambridge Assessment Group. Cambridge Assessment is the brand name of University of Cambridge Local Examinations Syndicate (UCLES), which is itself a department of the University of Cambridge.